

4

3

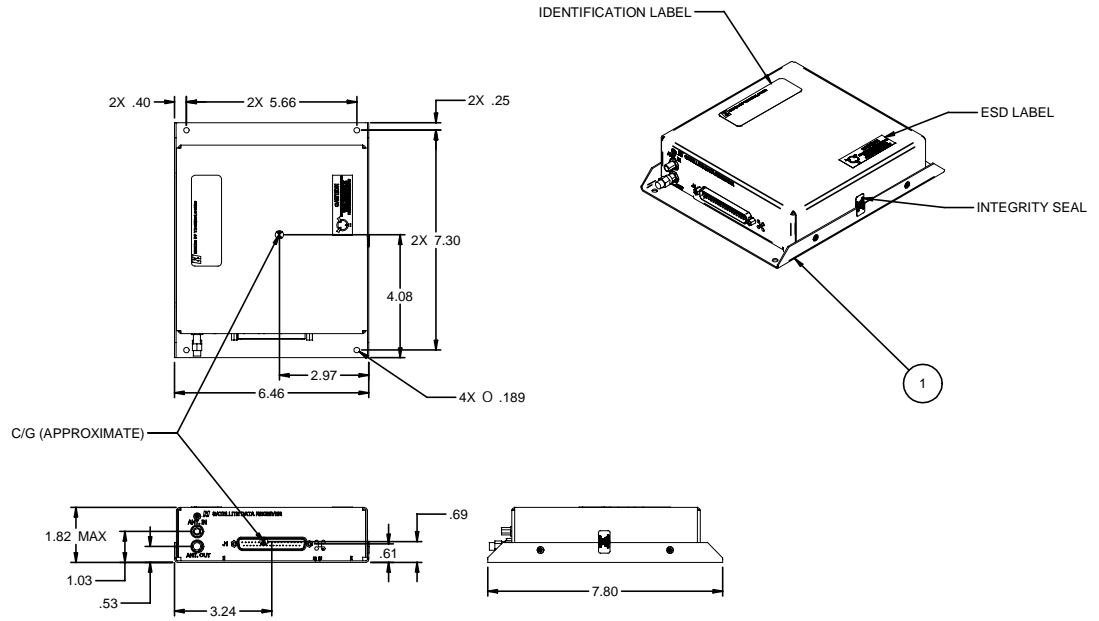
2

1

NOTE:

- 1.) IF "ANT OUT" IS UNUSED, INSTALL SMA PLUG TERMINATION (HUT P/N CON428). TORQUE TO 7-10 IN LBS (100 N cm).
- 2.) DO-160D ENV CATEGORY [(A2)(F2)X]BAB[HBR]EXXXXXZ[(B)(Z)AZZ[TT]M[A2E2X]XA
- 3.) SOFTWARE MEETS THE REQUIREMENTS OF RTCA DO-178B, LEVEL E.
- 4.) INSTALL PER INSTALLATION MANUAL, HEADS UP TECHNOLOGIES DOCUMENT XMD076-3.
- 5.) POWER REQUIREMENTS: 14-28 VDC WITH A NOMINAL CURRENT OF 0.2 AMPS
- 6.) UNIT WEIGHT IS APPROX 1.4 LBS
- 7.) THIS IS AN INSTALLATION CONTROL DRAWING THAT REFERENCES HEADS UP TECHNOLOGIES PART NUMBER XMD076-01

REVISIONS			
REV	DESCRIPTION	DATE	APPROVED
A	CHANGED PER ECN 852.	6-14-04	D. CAPKA
B	ADDED NOTES 2-7 AND P/L.	8-11-04	D. CAPKA



1	1	XMD076-01	ASSEMBLY DRAWING PACKAGE XMD076-01.ASM		
QTY	ITEM NO	PART NUMBER	DESCRIPTION	SPECIFICATION	NOTES
PARTS LIST					
UNLESS OTHERWISE SPECIFIED • DIMENSIONS ARE IN INCHES • TOLERANCES: ANGLES ±1° 3 PLACE DECIMALS ±.010 2 PLACE DECIMALS ±.02 • INTERPRET DRAWING PER DOD-D-1000 • REMOVE ALL BURRS AND SHARP EDGES • CONCENTRICITY MACHINED DIAMETERS .010 FIM • DIMENSIONAL LIMITS APPLY BEFORE PROCESSES • PARENTHEICAL INFO FOR REF ONLY			DWN: D. CAPKA DATE: 5-26-04 CHECK: D. CAPKA DATE: 5-26-04 ENGR: D. CAPKA DATE: 5-26-04 APPROVED: DATE: RELEASED: DATE:		HEADS UP TECHNOLOGIES 2033 Cherrault Drive Suite 100 Carrollton, TX 75006 (972) 407-1131
HOLE DIAMETER TOLERANCE .013 THRU +.004 THRU -.001 .125 THRU +.008 THRU -.001 .251 THRU +.010 THRU -.001 .501 THRU +.012 THRU -.001 1.001 THRU +.012 THRU -.001 2.000 THRU +.012 THRU -.001			SIGNATURES ON FILE CONTRACT: PROJECT:		

4

3

2

1

D

C

B

A

D

C

DWG NO

A

B

C

A