

4

3

2

1

NOTE:

1.) IF "ANT OUT" IS UNUSED, INSTALL SMA PLUG TERMINATION (HUT P/N CON428). TORQUE TO 7-10 IN LBS (100 N cm).

REVISIONS			
REV	DESCRIPTION	DATE	APPROVED
A	MODIFIED BOX DIMENSION	10/28/2002	Dcapka
B	MODIFIED PINOUT TABLE	1/27/2003	Dcapka
C	ADDED CONNECTOR INFORMATION	7/21/03	D. CAPKA
D	ADDED NOTE 1.	9-15-03	D. CAPKA
E	ADD DIMS AND LABEL INFORMATION.	6-7-04	D. CAPKA
F	UPDATE TO J1 CONNECTOR PIN OUT INFO.	10-26-04	D. CAPKA
G	CHANGE PER ECN 2054.	1-9-08	D. CAPKA

D

CONNECTOR J1 – 37D PINS, KYCON P/N KF44-C37P-S (SIMILAR TO M24308/24-28) MATES WITH – ITT P/N DCA37SA197FO

Pin	Function	Pin	Function
1	N/C	20	N/C
2	RS485 GND	21	RS485 HIGH
3	RS485 LOW	22	RS232 TX
4	RS232 RX	23	RS232 GND
5	RS485 HIGH	24	RS485 LOW
6	RS485 GND	25	CAN LOW
7	CAN HIGH	26	CAN GND
8	N/C	27	DISABLE ANNOUNCEMENTS
9	V-BIT 2	28	V-BIT 1
10	V-BIT 0	29	AUDIO MUTE
11	N/C	30	N/C
12	N/C	31	N/C
13	N/C	32	N/C
14	N/C	33	N/C
15	N/C	34	N/C
16	N/C	35	N/C
17	N/C	36	N/C
18	POWER ENABLE	37	POWER GND
19	28 VDC INPUT		

CONNECTORS (P1 thru P8) – 25D PINS, KYCON P/N KF44-B25P-S (SIMILAR TO M24308/24-27) MATES WITH – ITT P/N DBA25SA197FO

Pin	Function	Pin	Function
1	LH AUDIO HIGH	14	LH AUDIO LOW
2	RH AUDIO HIGH	15	RH AUDIO LOW
3	N/C	16	N/C
4	N/C	17	N/C
5	N/C	18	N/C
6	N/C	19	CHANNEL UP
7	CHANNEL DOWN	20	CATEGORY UP
8	CATEGORY DOWN	21	PRESET UP
9	PRESET DOWN	22	N/C
10	N/C	23	N/C
11	N/C	24	N/C
12	N/C	25	DISCRETE COMMON
13	N/C		

CONNECTOR ANTIN – SMA JACK, TYCO 1051942-1, MATES WITH – AMPHENOL P/N 901-9876-RFX

Pin	Function
1	ANTENNA IN (SMA JACK)

CONNECTOR ANTOUT – SMA JACK, TYCO 1051942-1, MATES WITH – AMPHENOL P/N 901-9876-RFX

Pin	Function
1	ANTENNA OUT (SMA JACK)

POWER REQUIREMENTS:

THE RECEIVER ASSEMBLY IS POWERED BY 28VDC WEIGHT WITH A NOMINAL CURRENT OF 2 AMPS AND 4 AMPS MAX.

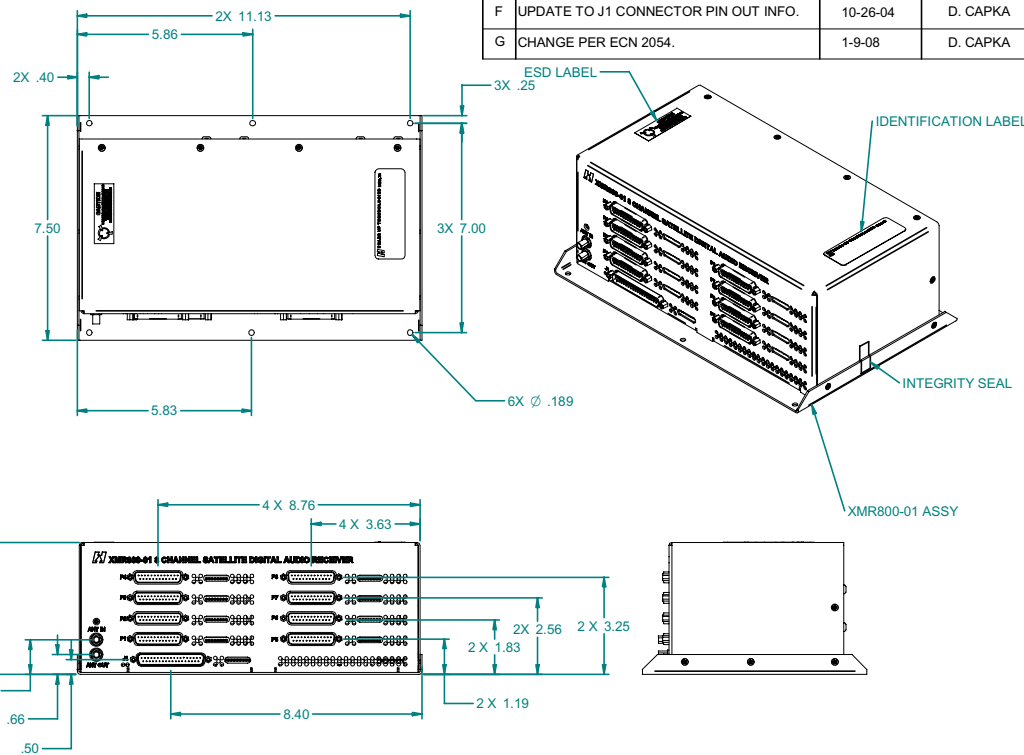
MAXIMUM UNIT WEIGHT IS APPROX 7.5 LBS.

THIS IS AN INSTALLATION CONTROL DRAWING THAT REFERENCES HEADS UP TECHNOLOGIES PART# XMR800-01.

C

B

A



D

C

B

A

QTY	ITEM NO	PART NUMBER	DESCRIPTION	SPECIFICATION	NOTES
PARTS LIST					
			UNLESS OTHERWISE SPECIFIED • DIMENSIONS ARE IN INCHES • TOLERANCES: ANGLES ± 1° 3 PLACE DECIMALS ±0.10 2 PLACE DECIMALS ±0.02 • INTERPRET DRAWING PER DDD-D-1000 • REMOVE ALL BURRS AND SHARP EDGES • CONCENTRICITY MACHINED DIAMETERS 0.10 FIM • DIMENSIONAL LIMITS APPLY BEFORE PROCESSES • PARENTHETICAL INFO FOR REF ONLY	DWN: G. SNYDER DATE: 1-31-03 CHECK: G. SNYDER DATE: 1-31-03 ENGR: G. SNYDER DATE: 1-31-03 APPROVED: [Signature] DATE: 1-31-03 RELEASED: [Signature] DATE: 1-31-03 CONTRACT: [Signature] PROJECT: [Signature]	
USED ON		NEXT ASSY		HOLE DIAMETER TOLERANCE .013 +.004 -0.002 THRU +.001 -0.001 THRU +.001 -0.001 THRU +.001 -0.001 .501 +.008 -0.001 THRU +.001 -0.001 THRU +.010 -0.001 THRU +.012 -0.001	
			HEADS UP TECHNOLOGIES 2033 Chenault Drive Suite 100 Carrollton, TX 75006 (972) 407-1131		
			INTERFACE CONTROL DRAWING (ICD) 8 CHANNEL XM RECEIVER		
SIZE: B		FILENAME: XMR800-01-ICD.G		DRAWING NO: XMR800-01-ICD	
SCALE: NONE		REV: G		SHEET 1 OF 1	

4

3

2

1